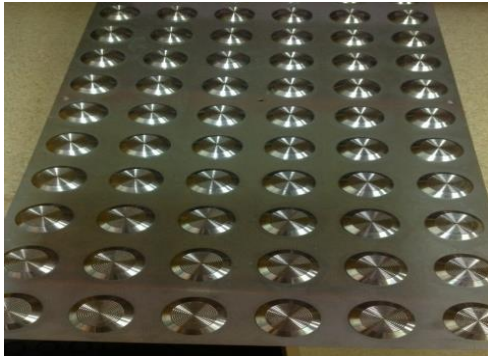
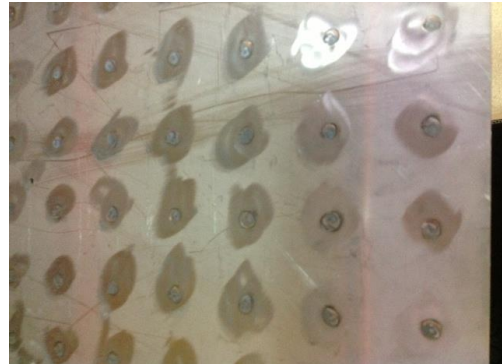


316 STAINLESS STEEL TACTILE PLATES

300mm x 300mm - 300mm x 600mm



Front of plate



Back off plate

The benefits from the Floorsafe Australia Tactile plates is that the Tactile Indicators are fixed through the 316 Stainless steel plate and fully welded.

Fully welded Tactile Indicators assures that the Tactiles cannot come off or be removed.

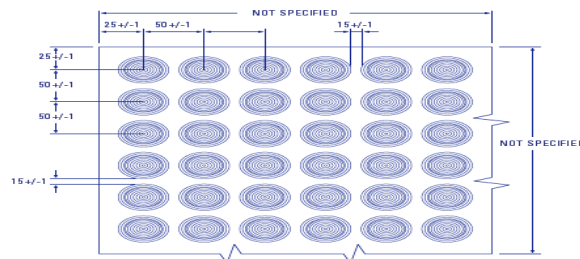
**Manufactured to meet Australian & New Zealand standards 1428.4:2.2.3.3
Meets the classification YBPN 25-34 according to AS/NZS: 4586:2004**

Suitable for indoor & outdoor use.

Guaranteed for 10 years under normal conditions.

Plate size: 300mm x 300mm containing 36 fully welded 316 S/S tactile indicators
300mm x 600mm containing 72 fully welded 316 S/S Tactile Indicators

Thickness: 7mm



Plates come with 6 drilled fixing holes. 2 at each end and 2 in the middle.
Plates can also be fixed using an approved adhesive.